

# OUTDOOR RETRACTABLE



1 Instructions to appear in this section.



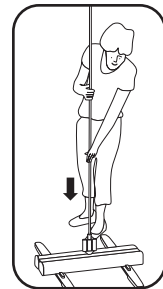
2 Instructions to appear in this section.



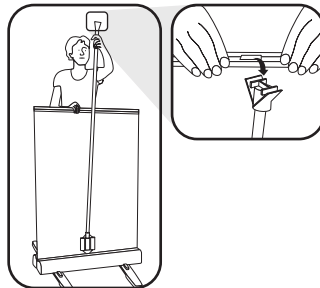
3 Instructions to appear in this section.



4 Instructions to appear in this section.



5 Instructions to appear in this section.



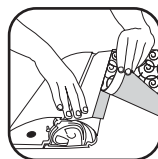
6 Instructions to appear in this section.



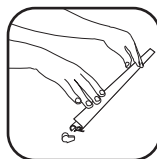
## REMOVING THE GRAPHIC



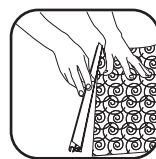
1 Pull graphic out until the leader is exposed. Insert locking pin to disable the roller.\*



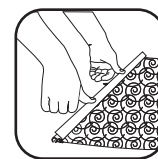
2 Remove graphic and replace.



3 Remove end caps and pull open the snap lock profile.



4 Once the snap lock profile is open insert top portion of graphic into profile.\*



5 Apply even pressure to the snap lock profile to lock graphic into place. Replace end caps.



6 Grip image and unit securely and remove locking pin. Slowly guide image back into unit.